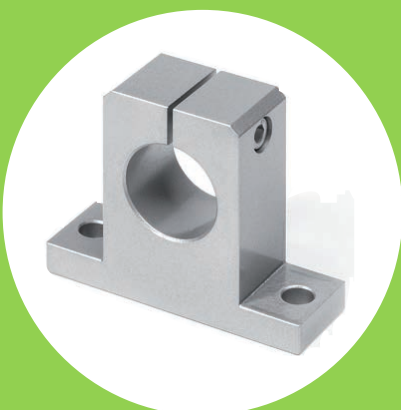


LINEAR BUSHES & SHAFT
STOCK CATALOGUE
EDITION 01





**SB Closed Standard
Bush Housings**



**SVT Closed Flanged
Bush Housings**



**FGWA Standard
Shaft Support**



**SBT Closed Extended
Bush Housings**



**FGWH Threaded
Shaft Support**



**LM / LME Standard
Linear Bushes**



**FTSU Compact
Support Rail**



**SO Open Standard
Bush Housings**










**LMK / LMF Flanged
Linear Bushes**



**FTSN Standard
Support Rail**



**SOT Open Extended
Bush Housings**

Standard Linear Shaft	05 – 07	
Stainless Steel Linear Shaft	08 – 09	
Shaft Support Rails	10 – 11	
Shaft Support Blocks	12 – 13	
Manual & Pneumatic Clamps	14 – 16	
Asian Standard Plain Bushes	17 – 19	
Asian Standard Flanged Bushes	20 – 23	
Open Type Bushes for Support Rails	24 – 25	
European Standard Plain Bushes	26 – 27	
European Standard Flanged Bushes	28 – 29	
Closed Type Bushes in Housings	30 – 31	
Open Type Bushes in Housings	32 – 33	
Flanged Type Bushes in Housings	34 – 35	

WMH have been a market leader in mechanical power transmission design and manufacture for over 50 years. Our professional sales team and technical support staff are dedicated to quality customer service, dependability and product excellence.

With years of commercial experience, ISO 9001/2008 accreditation and a highly skilled workforce from the shop floor through to management, you can be confident in choosing **WMH** for all your power transmission needs.

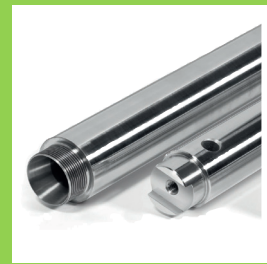
We hold extensive stock at our headquarters in Tamworth, Staffordshire situated on junction 10 of the M42 just north of the N.E.C, Birmingham providing excellent access to the motorway network and our customers.

Here at **WMH**, we offer unrivalled customer service and product quality. We focus on several specialist transmission and linear motion services:

- Rack & pinion milling and grinding -
- In house manufacture of leadscrews & nuts -
- Stock, design and distribution of linear guides -
- Machining & assembly of rolled & ground ballscrews -
- Integrated & stand alone lubrication systems -
- Design and manufacture of screw jack lifting systems -
- High precision planetary and bevel gearboxes -

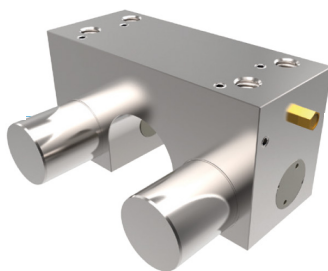
Our in-house, fully equipped CNC machine shop and years of industry experience gives us the capability to tailor any products to specific customer requirements – contact our sales team with your requirements.



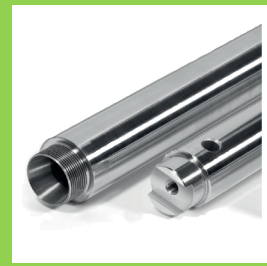


Linear Shafts & Supports

- Precision hard and ground linear shaft
- Also available in stainless steel
- In house drilling & machining service
- Manual & Pneumatic Clamps
- End support blocks
- Predrilled support rails

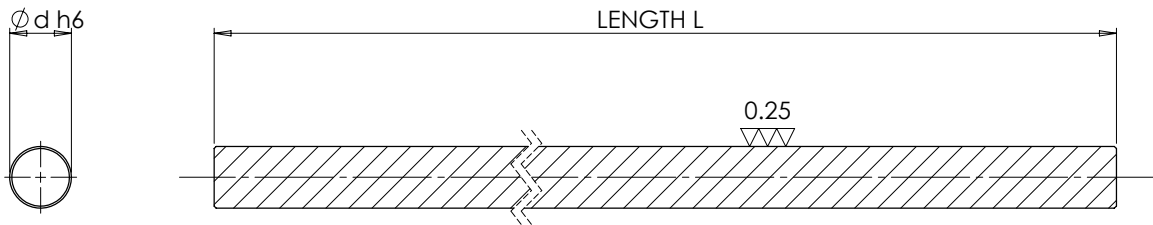


WMH OFFER SPECIAL DRILLING AND MACHINING OPTIONS TO CUSTOMER SPECIFICATION
PLEASE FORWARD YOUR REQUIREMENTS TO OUR SALES TEAM



Hard & Ground Shaft – W

Steel – Cf53



Size $\varnothing d$	h6	Hardness Depth (mm)	L Max	Mass (kg/m)	Part Number
6	0 / -8	0.5 ~ 0.8	6000	0.23	W6 x 6000
8	0 / -9	0.6 ~ 0.9	6000	0.40	W8 x 6000
10	0 / -9	0.7 ~ 1.0	6000	0.62	W10 x 6000
12	0 / -11	0.8 ~ 1.2	6000	0.89	W12 x 6000
16	0 / -11	1.1 ~ 1.5	6000	1.58	W16 x 6000
20	0 / -13	1.2 ~ 1.5	6000	2.47	W20 x 6000
25	0 / -13	1.5 ~ 1.7	6000	3.85	W25 x 6000
30	0 / -13	1.5 ~ 1.9	6000	5.55	W30 x 6000
40	0 / -16	1.6 ~ 2.0	6000	9.87	W40 x 6000
50	0 / -16	2.2 ~ 2.6	6000	15.4	W50 x 6000
60	0 / -19	2.2 ~ 2.6	6000	22.2	W60 x 6000

NOTE: Stock length part number shown. We can cut to length in house, please replace last 4 digits with the length you require:

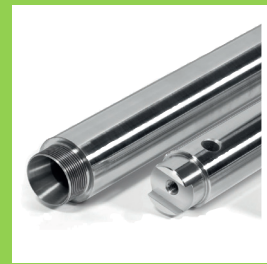
Example: Code for 1355mm length would be "W12 x 1355"

Material Grade	Surface Hardness
Cf53, Ck55, C55E, C60E	60 ~ 64 HRC

Please see our range of shaft supports on pages 12 & 13

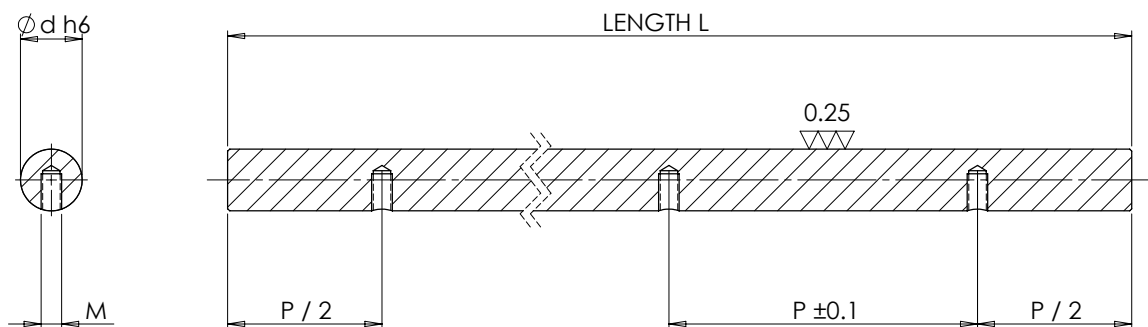
Standard range shown, other sizes also available on request

WMH OFFER SPECIAL DRILLING AND MACHINING OPTIONS TO CUSTOMER SPECIFICATION
PLEASE FORWARD YOUR REQUIREMENTS TO OUR SALES TEAM



Pre Drilled Linear Shaft – WB

For FTSU and FTSN Shaft Supports



Size Ø d	h6	Hardness Depth (mm)	L Max	Mass (kg/m)	M	Support Type	P	Part Number
12	0 / -11	0.8 ~ 1.2	6000	0.89	M4 x 8	FTSU	75	WB-12-A x 6000
						FTSN		
16	0 / -11	1.1 ~ 1.5	6000	1.58	M5 x 9	FTSU	75	WB-16-A x 6000
						FTSN	100	WB-16-B x 6000
20	0 / -13	1.2 ~ 1.5	6000	2.47	M6 x 11	FTSU	75	WB-20-B x 6000
						FTSN	100	WB-20-C x 6000
25	0 / -13	1.5 ~ 1.7	6000	3.85	M8 x 15	FTSU	75	WB-25-B x 6000
						FTSN	120	WB-25-D x 6000
30	0 / -13	1.5 ~ 1.9	6000	5.55	M10 x 17	FTSU	100	WB-30-C x 6000
					M10 x 15	FTSN	150	WB-30-F x 6000
40	0 / -16	1.6 ~ 2.0	6000	9.87	M12 x 21	FTSU	100	WB-40-B x 6000
					M10 x 19	FTSN	200	WB-40-E x 6000
50	0 / -16	2.2 ~ 2.6	6000	15.4	M10 x 21	FTSN	200	WB-50-E x 6000

NOTE: Stock length part number shown. We can cut to length in house, please replace last 4 digits with the length you require:

Example: Code for 1355mm length would be "WB-12-A x 1355"

NOTE: Shafts will be cut with distance from end to first mounting hole equal distance at each end unless otherwise specified.

Material Grade	Surface Hardness
Cf53, Ck55, C55E, C60E	60 ~ 64 HRC

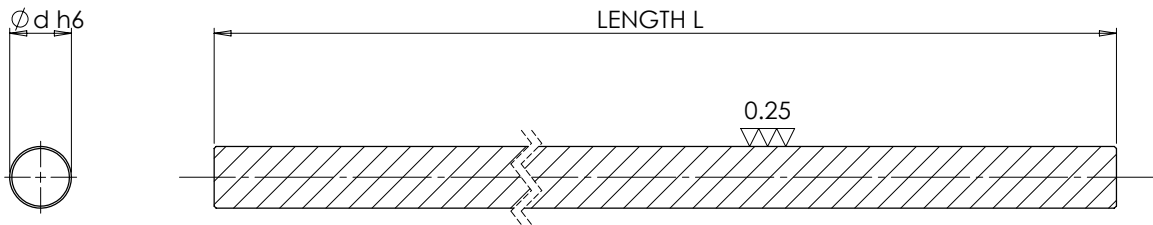
Please see our range of shaft support rails on pages 10 & 11

WMH OFFER SPECIAL DRILLING AND MACHINING OPTIONS TO CUSTOMER SPECIFICATION
PLEASE FORWARD YOUR REQUIREMENTS TO OUR SALES TEAM



Hard & Ground Shaft – WRA

Stainless Steel – X90



Size Ø d	h6	Hardness Depth (mm)	L Max	Mass (kg/m)	Part Number
6	0 / -8	0.5 ~ 0.8	6000	0.23	WRA6 x 6000
8	0 / -9	0.6 ~ 0.9	6000	0.40	WRA8 x 6000
10	0 / -9	0.7 ~ 1.0	6000	0.62	WRA10 x 6000
12	0 / -11	0.8 ~ 1.2	6000	0.89	WRA12 x 6000
16	0 / -11	1.1 ~ 1.5	6000	1.58	WRA16 x 6000
20	0 / -13	1.2 ~ 1.5	6000	2.47	WRA20 x 6000
25	0 / -13	1.5 ~ 1.7	6000	3.85	WRA25 x 6000
30	0 / -13	1.5 ~ 1.9	6000	5.55	WRA30 x 6000
40	0 / -16	1.6 ~ 2.0	6000	9.87	WRA40 x 6000
50	0 / -16	2.7 ~ 3.2	6000	15.4	WRA50 x 6000
60	0 / -19	2.9 ~ 3.3	6000	22.2	WRA60 x 6000

NOTE: Stock length part number shown. We can cut to length in house, please replace last 4 digits with the length you require:

Example: Code for 1355mm length would be “WRA12 x 1355”

Material Grade	Surface Hardness
X90CrMoV18 (440B 1.4112)	55 ~ 59 HRC

Please see our range of shaft supports on pages 12 & 13

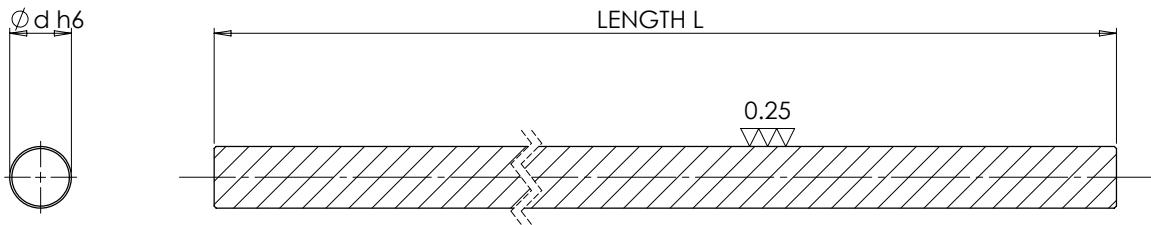
Standard range shown, other sizes also available on request

**WMH OFFER SPECIAL DRILLING AND MACHINING OPTIONS TO CUSTOMER SPECIFICATION
PLEASE FORWARD YOUR REQUIREMENTS TO OUR SALES TEAM**



Hard & Ground Shaft – WRB

Stainless Steel – X46



Size $\varnothing d$	h6	Hardness Depth (mm)	L Max	Mass (kg/m)	Part Number
6	0 / -8	0.5 ~ 0.8	6000	0.23	WRB6 x 6000
8	0 / -9	0.6 ~ 0.9	6000	0.40	WRB8 x 6000
10	0 / -9	0.7 ~ 1.0	6000	0.62	WRB10 x 6000
12	0 / -11	0.8 ~ 1.2	6000	0.89	WRB12 x 6000
16	0 / -11	1.1 ~ 1.5	6000	1.58	WRB16 x 6000
20	0 / -13	1.2 ~ 1.5	6000	2.47	WRB20 x 6000
25	0 / -13	1.5 ~ 1.7	6000	3.85	WRB25 x 6000
30	0 / -13	1.5 ~ 1.9	6000	5.55	WRB30 x 6000
40	0 / -16	1.6 ~ 2.0	6000	9.87	WRB40 x 6000
50	0 / -16	2.7 ~ 3.2	6000	15.4	WRB50 x 6000
60	0 / -19	2.9 ~ 3.3	6000	22.2	WRB60 x 6000

NOTE: Stock length part number shown. We can cut to length in house, please replace last 4 digits with the length you require:

Example: Code for 1355mm length would be "WRB12 x 1355"

Material Grade	Surface Hardness
X46Cr13 (420C 1.4034)	53 ~ 57 HRC

Please see our range of shaft supports on pages 12 & 13

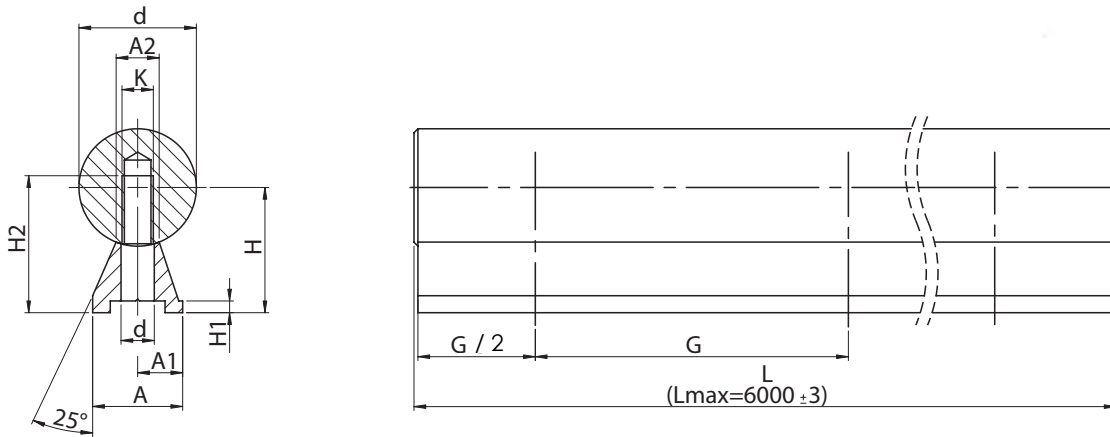
Standard range shown, other sizes also available on request

WMH OFFER SPECIAL DRILLING AND MACHINING OPTIONS TO CUSTOMER SPECIFICATION
PLEASE FORWARD YOUR REQUIREMENTS TO OUR SALES TEAM



Support Rail – FTSU

Compact Type – Aluminium



Size $\varnothing d$	A	H ± 0.2	A1	A2	H1	K	d2	H2	G	Mass (kg/m)	Part Number
12	11	14.5	5.5	5.4	3	M4	4.5	16.0	75	0.44	FTSU-12-G x 6000
16	14	18	7.0	7.0	3	M5	5.5	19.0	75	0.56	FTSU-16-G x 6000
20	17	22	8.5	8.1	3	M6	6.6	23.0	75	0.81	FTSU-20-G x 6000
25	21	26	10.5	10.3	3	M8	9.0	28.5	75	1.06	FTSU-25-G x 6000
30	23	30	11.5	11.0	3	M10	11.0	32.0	100	1.25	FTSU-30-G x 6000
40	30	39	15.0	15.0	4	M12	13.5	39.5	100	2.16	FTSU-40-G x 6000

NOTE: Stock length part number shown. We can cut to length in house, please replace last 4 digits with the length you require:

Example: Code for 1355mm length would be "FTSU-16-G x 1355"

NOTE: Rails will be cut with distance from end to first mounting hole equal distance at each end unless otherwise specified.

Material Grade

6060 Aluminium, Anodised

Linear shaft shown for reference only, sold separately

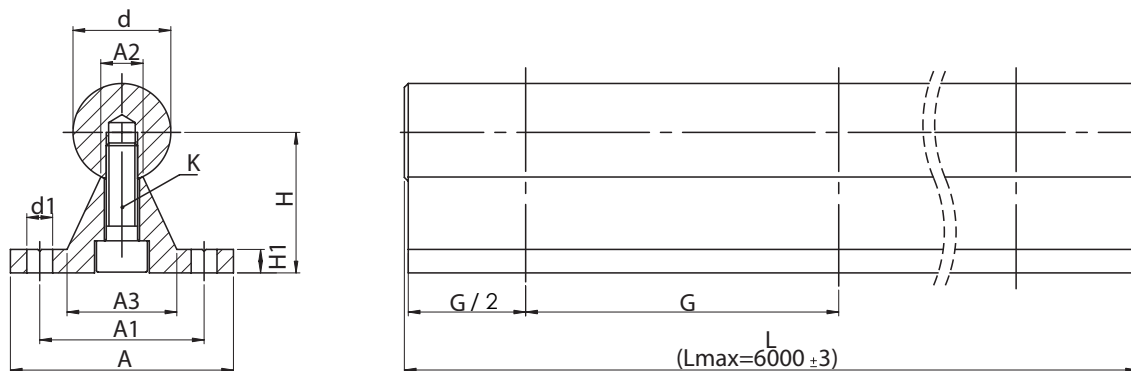
Please see our range of pre-drilled linear shafts on page 7

WMH OFFER SPECIAL DRILLING AND MACHINING OPTIONS TO CUSTOMER SPECIFICATION
PLEASE FORWARD YOUR REQUIREMENTS TO OUR SALES TEAM



Support Rail – FTSN

Standard Type – Aluminium



Size Ø d	A	H ±0.2	A2	A3	H1	A1	d1	G	K	Mass (kg/m)	Part Number
12	40	22	5.4	15	5	29	4.5	75	M4 x 20	0.52	FTSN-12-G x 6000
16	45	26	7.0	19	5	33	5.5	100	M5 x 20	0.64	FTSN-16-G x 6000
20	52	32	8.1	23	6	37	6.6	100	M6 x 25	0.90	FTSN-20-G x 6000
25	57	36	10.3	26	6	42	6.6	120	M8 x 30	1.08	FTSN-25-G x 6000
30	69	42	11.0	29	7	51	9.0	150	M10 x 35	1.43	FTSN-30-G x 6000
40	73	50	11.0	36	8	55	9.0	200	M10 x 40	1.81	FTSN-40-G x 6000
50	84	60	19.0	40	9	63	11.0	200	M12 x 45	2.45	FTSN-50-G x 6000

NOTE: Stock length part number shown. We can cut to length in house, please replace last 4 digits with the length you require:

Example: Code for 1355mm length would be "FTSN-16-G x 1355"

NOTE: Rails will be cut with distance from end to first mounting hole equal distance at each end unless otherwise specified.

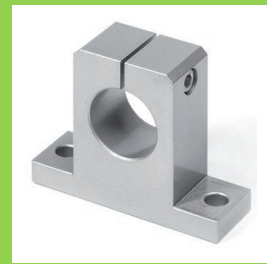
Material Grade

6060 Aluminium, Anodised

Linear shaft shown for reference only, sold separately

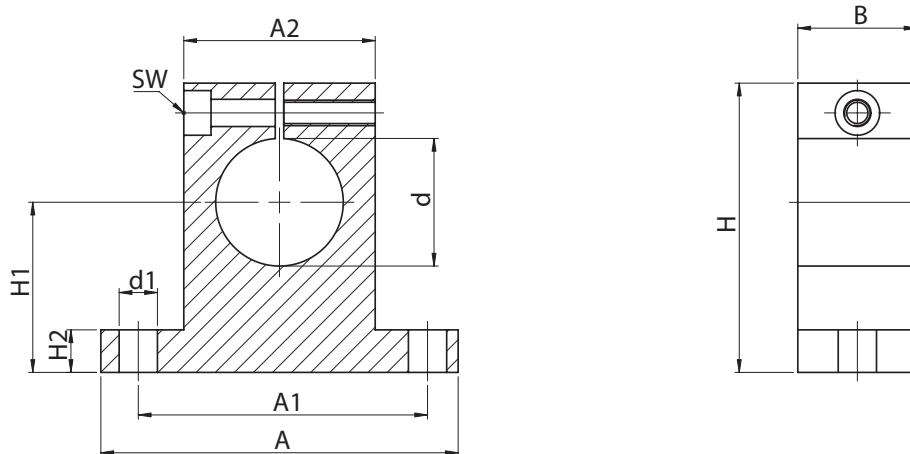
Please see our range of pre-drilled linear shafts on page 7

WMH OFFER SPECIAL DRILLING AND MACHINING OPTIONS TO CUSTOMER SPECIFICATION
PLEASE FORWARD YOUR REQUIREMENTS TO OUR SALES TEAM



Shaft Supports – FGWA

Standard Type – Aluminium



Size Ø d	A	B	H	H1	A1 ±0.15	A2	d1	SW	H2	Mass (kg)	Part Number
8	32	10	27	15	25	16	4.5	M3	5.0	0.01	FGWA - 08
12	42	12	35	20	32	20	5.5	M3	5.5	0.02	FGWA - 12
16	50	16	42	25	40	28	5.5	M3	6.5	0.03	FGWA - 16
20	60	20	50	30	45	32	5.5	M4	8.0	0.07	FGWA - 20
25	74	25	59	35	60	38	6.6	M5	9.0	0.14	FGWA - 25
30	84	28	68	40	68	45	9.0	M6	10	0.20	FGWA - 30
40	108	32	86	50	86	56	11.0	M8	12	0.48	FGWA - 40
50	130	40	100	60	108	80	11.0	M8	14	1.90	FGWA - 50
60	160	48	124	75	132	100	13.5	M8	15	3.60	FGWA - 60

Material Grade

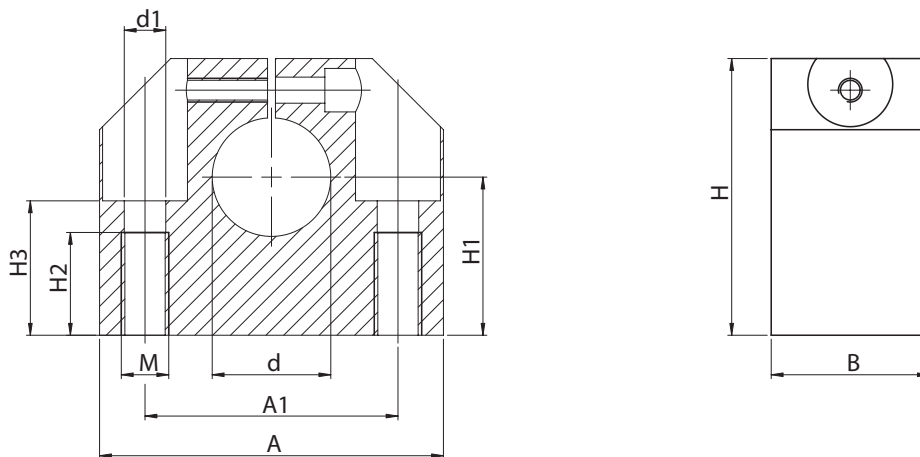
6063 or 6082 Aluminium

WMH OFFER SPECIAL DRILLING AND MACHINING OPTIONS TO CUSTOMER SPECIFICATION
PLEASE FORWARD YOUR REQUIREMENTS TO OUR SALES TEAM



Shaft Supports – FGWH

Heavy Duty – Aluminium



Size Ø d	A	B	H	H1 ± 0.0	A1 ±0.15	d1	M	H2	H3	Mass (kg)	Part Number
6	32	16	27	15	22	4.2	M5	11	13	0.03	FGWH - 06
8	32	16	27	16	22	4.2	M5	11	13	0.03	FGWH - 08
10	40	18	33	18	27	5.2	M6	13	16	0.05	FGWH - 10
12	40	18	33	19	27	5.2	M6	13	16	0.05	FGWH - 12
14	45	20	38	20	32	5.2	M6	13	18	0.07	FGWH - 14
16	45	20	38	22	32	5.2	M6	13	18	0.07	FGWH - 16
20	53	24	45	25	39	6.8	M8	18	22	0.12	FGWH - 20
25	62	28	54	31	44	8.6	M10	22	26	0.17	FGWH - 25
30	67	30	60	34	49	8.6	M10	22	29	0.22	FGWH - 30
40	87	40	76	42	66	10.3	M12	26	38	0.48	FGWH - 40
50	103	50	92	50	80	14.3	M16	34	46	0.82	FGWH - 50

Material Grade

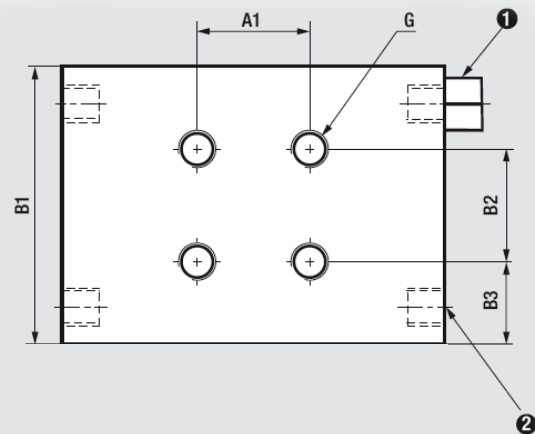
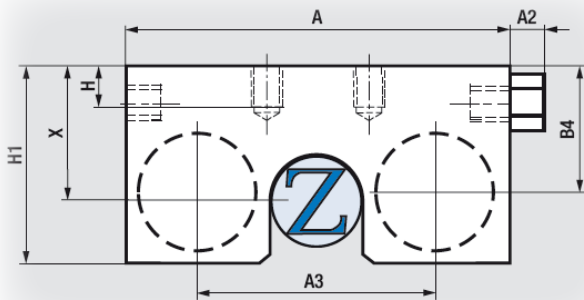
6063 or 6082 Aluminium

WMH OFFER SPECIAL DRILLING AND MACHINING OPTIONS TO CUSTOMER SPECIFICATION
PLEASE FORWARD YOUR REQUIREMENTS TO OUR SALES TEAM



Pneumatic Clamps – MKR

For Round Linear Shafts – Normally Open



Air connections are located on both sides and can be exchanged according to mounting requirements. Only one connection is necessary for function.

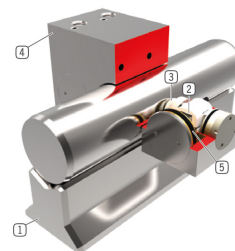
- ① MKR Series: Air filter
MKRS Series: M5 port (air connection)
- ② MKR Series: M5 port (air connection)
MKRS Series: Air filter

Size $\varnothing d$	A	A1	A2	B1	B2	B3	B4	X	G	H	H1	Holding Force (N)	Holding Torque (N)	Part Number
12	50	15	5	37	15	11	18	18	M5	6	27.5	650	4	MKR1200A
16	55	15	5	39	15	12.5	22	22	M5	6	32	650	6	MKR1600A
20	66	45	5	38	18	13	25	25	M8	10	38	1000	10	MKR2000A
25	77	60	5	43	20	15	30	30	M10	12	43	1200	15	MKR2500A
30	92	68	5	48.5	25	14	34	35	M10	13	48.5	1750	26	MKR3000A
40	120	90	5	49	26	14	45	45	M10	15	62	2000	37	MKR4000A
50	132	108	5	49	30	9.5	50	50	M10	15	67	1850	46	MKR5000A
60	142	108	5	49	30	9.5	50	50	M10	15	67	1850	56	MKR6000A

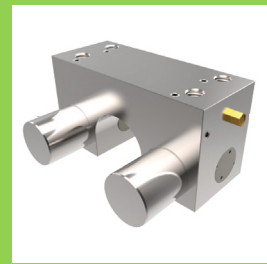
NOTE: Minimum 54 HRC surface hardness of linear shaft required

Operating Pressure	Operating Temperature	Shaft Tolerance
3 ~ 6.5 Bar	-10 ~ +70 °C	± 0.01 mm

- ① **Circular guide**
- Compatible with circular and shaft guides
- ② **Wedge-type gear**
- Power transmission between piston and clamping jaw
- ③ **Clamping jaw**
- Pressed at the circular guide
- ④ **Housing**
- chemically nickel plated steel
- ⑤ **Pneumatic piston**
- The piston moves the wedge-type gear longitudinally

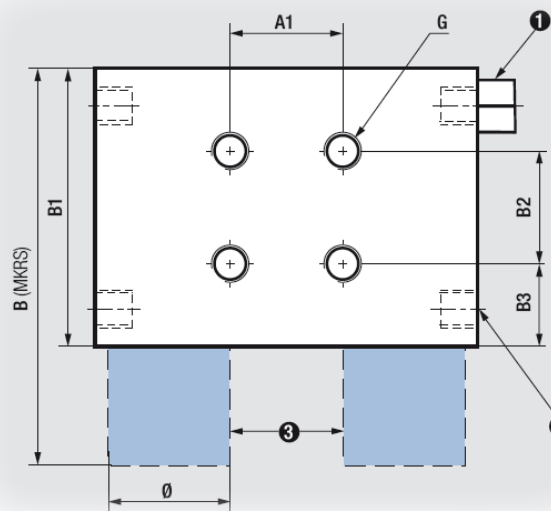
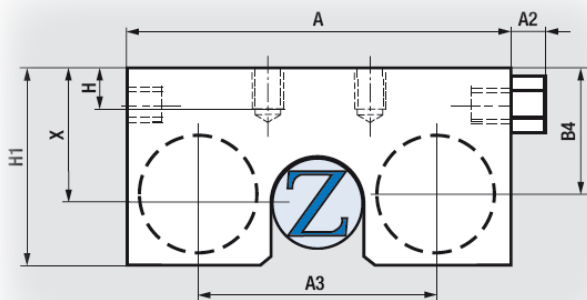


**PNEUMATIC CLAMPING ELEMENTS ARE FOR LOCKING LINEAR SHAFTS IN PLACE
NOT SUITABLE FOR DYNAMIC BREAKING OR THE SLOWING DOWN OF MOVEMENT**



Pneumatic Clamps – MKRS

For Round Linear Shafts – Normally Closed



Air connections are located on both sides and can be exchanged according to mounting requirements. Only one connection is necessary for function.

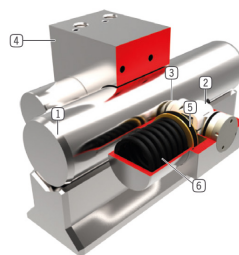
- 1 MKR Series: Air filter
MKRS Series: M5 port (air connection)
- 2 MKR Series: M5 port (air connection)
MKRS Series: Air filter
- 3 The attachment spring unit on the MKRS is not applicable on the MKR.

Size $\varnothing d$	A	A1	A2	B	B1	B2	B3	B4	X	G	H	H1	\varnothing	Holding Force (N)	Holding Torque (N)	Part Number
12	50	15	5	56	37	15	11	18	18	M5	6	27.5	16	350	2	MKRS1200A
16	55	15	5	58	39	15	12.5	22	22	M5	6	32	16	400	3	MKRS1600A
20	66	45	5	60	38	18	13	25	25	M8	10	38	20	600	6	MKRS2000A
25	77	60	5	63	43	20	15	30	30	M10	12	43	22	750	9	MKRS2500A
30	92	68	5	77.5	48.5	25	14	34	35	M10	13	48.5	25	1050	16	MKRS3000A
40	120	90	5	82	49	26	14	45	45	M10	15	62	30	1700	33	MKRS4000A
50	132	108	5	82	49	30	9.5	50	50	M10	15	67	30	1650	41	MKRS5000A
60	142	108	5	82	49	30	9.5	50	50	M10	15	67	30	1650	49	MKRS6000A

NOTE: Minimum 54 HRC surface hardness of linear shaft required

Operating Pressure	Operating Temperature	Shaft Tolerance
5.5 ~ 6.5 Bar	-10 ~ +70 °C	± 0.01 mm

- 1 **Circular guide**
- Compatible with circular and shaft guides
- 2 **Wedge-type gear**
- Power transmission between piston and clamping jaw
- 3 **Clamping jaw**
- Pressed at the circular guide
- 4 **Housing**
- chemically nickel plated steel
- 5 **Pneumatic piston**
- The piston moves the wedge-type gear longitudinally
- 6 **Spring-loaded energy storage**
- For non-pressurized closing of the clamping unit

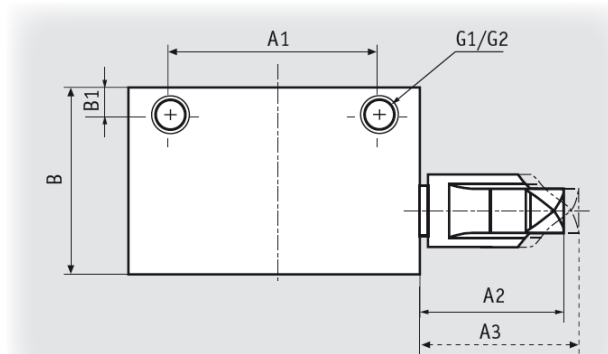
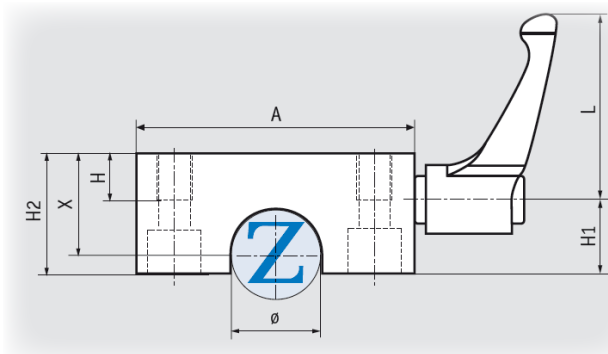


**PNEUMATIC CLAMPING ELEMENTS ARE FOR LOCKING LINEAR SHAFTS IN PLACE
NOT SUITABLE FOR DYNAMIC BREAKING OR THE SLOWING DOWN OF MOVEMENT**



Manual Clamps – HKR

For Round Linear Shafts



Comment

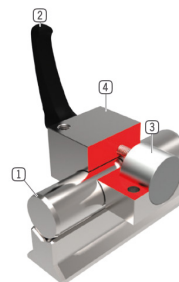
G1: connection from above
G2: connection from below

Size Ø d	A	A1	A2	A3	B	B1	X	H	H1	G1	G2	L	Holding Force (N)	Holding Torque (N)	Max. Tighten Torque (Nm)	Part Number
12	43	32	30.5	33.5	32	4.5	18	10	16.0	M5	M4	44	1200	7	5	HKR1200A
16	53	40	30.5	33.5	38	5.5	22	12	19.0	M6	M5	44	1200	9	5	HKR1600A
20	60	45	38.5	41.5	44	6.5	25	14	21.5	M8	M6	63	1200	12	7	HKR2000A
25	78	60	38.5	41.5	52	9	30	16	25.0	M10	M8	63	1200	15	7	HKR2500A
30	87	68	46.5	50.5	58	10	35	16	28.5	M10	M8	78	2000	30	12	HKR3000A
40	108	86	56.5	61.5	68	11	45	20	34.5	M12	M10	95	2000	40	17	HKR4000A
50	132	108	56.5	61.5	76	12	50	22	40.5	M16	M14	95	2000	50	17	HKR5000A

NOTE: Minimum 54 HRC surface hardness of linear shaft required

Operating Temperature	Shaft Tolerance
-10 ~ +70 °C	± 0.01 mm

- ① **Circular guide**
- Compatible with circular and shaft guides
- ② **Clamping lever made from plastic**
- Freely adjustable (release by lifting)
- ③ **Clamping jaw**
- The floating bearings guarantee symmetrical application of force
- ④ **Housing**
- chemically nickel plated steel

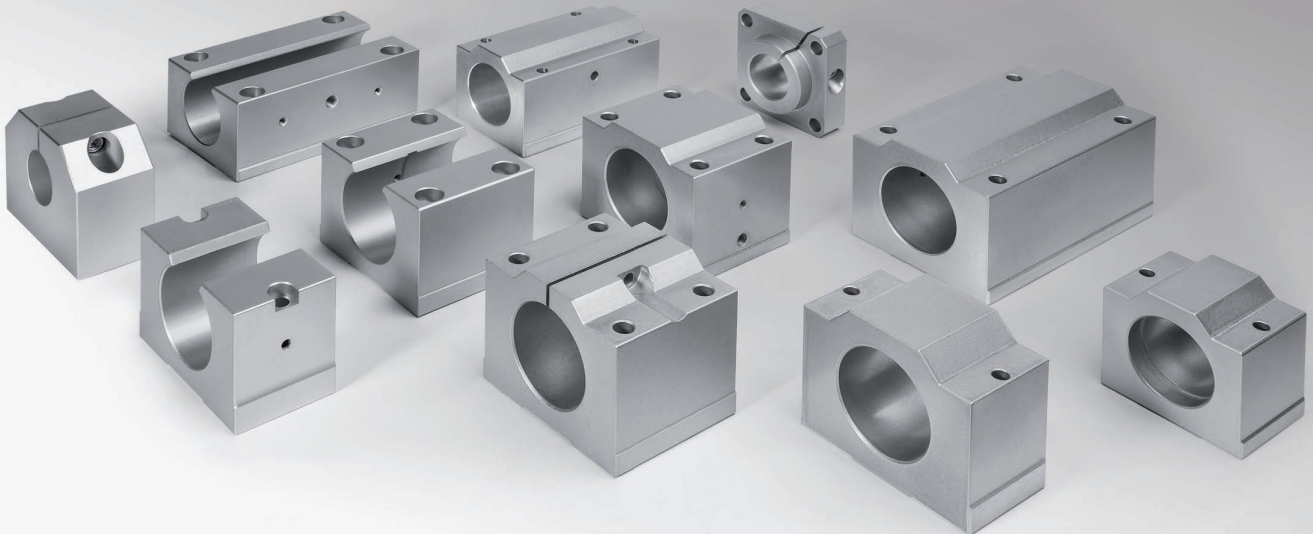


**MANUAL CLAMPING ELEMENTS ARE FOR LOCKING LINEAR SHAFTS IN PLACE
NOT SUITABLE FOR DYNAMIC BREAKING OR THE SLOWING DOWN OF MOVEMENT**



Linear Bushes & Housings

- Standard linear bushes
- Open type linear bushes
- Bushes with housings

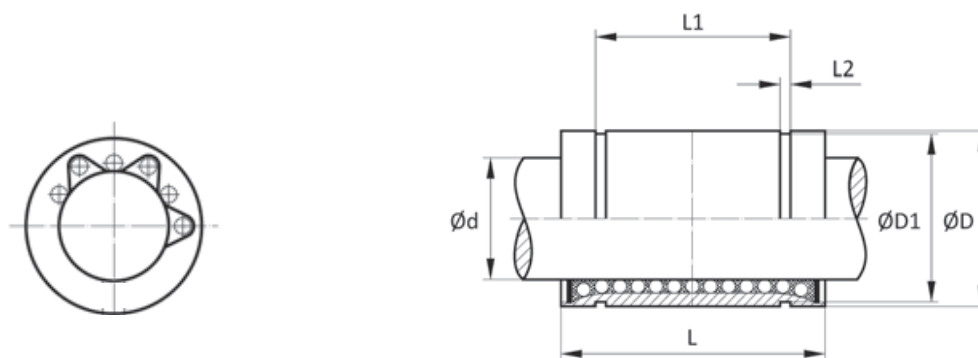


WMH OFFER SPECIAL DRILLING AND MACHINING OPTIONS TO CUSTOMER SPECIFICATION
PLEASE FORWARD YOUR REQUIREMENTS TO OUR SALES TEAM



Plain Linear Bushes – LM

Asian Standard – Standard Type



Size Ø d	Ø D h6	Ø D1	L -0.3	L1 -0.3	L2	Mass (kg)	Dyn. Cap (N)	Stat. Cap (N)	Part Number
8	15	14.3	24	17.5	1.0	0.02	260	400	LM08-UU
10	19	18.0	29	22.0	1.0	0.03	370	540	LM10-UU
12	21	20.0	30	23.0	1.5	0.04	410	590	LM12-UU
16	28	27.0	37	26.5	1.5	0.07	770	1170	LM16-UU
20	32	30.5	42	30.5	1.5	0.09	860	1370	LM20-UU
25	40	38.0	59	41.0	2.0	0.22	980	1560	LM25-UU
30	45	43.0	64	44.5	2.5	0.25	1560	2740	LM30-UU
40	60	57.0	80	60.5	3.0	0.59	2150	4010	LM40-UU
50	80	76.5	100	74.0	3.0	1.58	3820	7930	LM50-UU
60	90	86.5	110	85.0	3.0	2.00	4700	9990	LM60-UU

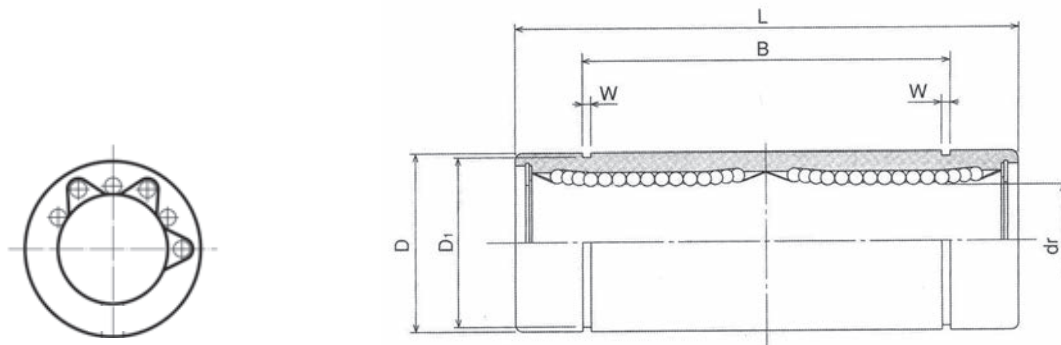
NOTE: Part number ending with "UU" signifies seal both ends

ADJUSTABLE BUSHES AND BUSHES WITH RELUBRICATION PORTS AVAILABLE ON REQUEST
PLEASE ALSO SEE OUR RANGE OF BUSHES COMPLETE WITH HOUSINGS



Plain Linear Bushes – LML

Asian Standard – Long Type



Size Ø dr	Ø D h6	Ø D1	L -0.3	B -0.3	W	Mass (kg)	Dyn. Cap (N)	Stat. Cap (N)	Part Number
8	15	14.3	45	35	1.0	0.03	430	780	LM08-LUU
10	19	18.0	55	44	1.0	0.06	580	1100	LM10-LUU
12	21	20.0	57	46	1.5	0.08	650	1200	LM12-LUU
16	28	27.0	70	53	1.5	0.15	1230	2350	LM16-LUU
20	32	30.5	80	61	1.5	0.18	1400	2750	LM20-LUU
25	40	38.0	112	82	2.0	0.44	1560	3140	LM25-LUU
30	45	43.0	123	89	2.5	0.58	2490	5490	LM30-LUU
40	60	57.0	154	121	3.0	1.17	3430	8040	LM40-LUU
50	80	76.5	192	148	3.0	3.1	6080	15900	LM50-LUU
60	90	86.5	211	170	3.0	3.5	7650	20000	LM60-LUU

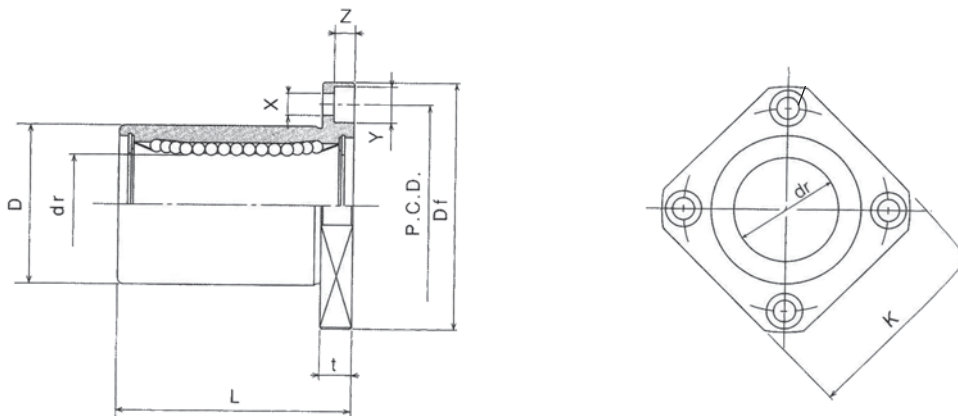
NOTE: Part number ending with "UU" signifies seal both ends

PLEASE ALSO SEE OUR RANGE OF BUSHES COMPLETE WITH HOUSINGS



Flanged Bushes – LMK

Asian Standard – Standard Type



Size Ø dr	Ø D h6	Ø Df -0.3	L -0.3	K	T	PCD	X x Y x Z	Mass (kg)	Dyn. Cap (N)	Stat. Cap (N)	Part Number
8	15	32	24	25	5	24	3.4 x 6.5 x 3.3	0.04	260	400	LMK08-UU
10	19	40	29	30	6	29	4.5 x 8.0 x 4.4	0.07	370	540	LMK10-UU
12	21	42	30	32	6	32	4.5 x 8.0 x 4.4	0.08	410	590	LMK12-UU
16	28	48	37	37	6	38	4.5 x 8.0 x 4.4	0.13	770	1170	LMK16-UU
20	32	54	42	42	8	43	5.5 x 9.5 x 5.4	0.18	860	1370	LMK20-UU
25	40	62	59	50	8	51	5.5 x 9.5 x 5.4	0.34	980	1560	LMK25-UU
30	45	74	64	58	10	60	6.6 x 11 x 6.5	0.46	1560	2740	LMK30-UU
40	60	96	80	75	13	78	9.0 x 14 x 8.6	1.05	2150	4010	LMK40-UU
50	80	116	100	92	13	98	9.0 x 14 x 8.6	2.20	3820	7930	LMK50-UU
60	90	134	110	106	18	112	11 x 17.5 x 10.8	2.96	4700	9990	LMK60-UU

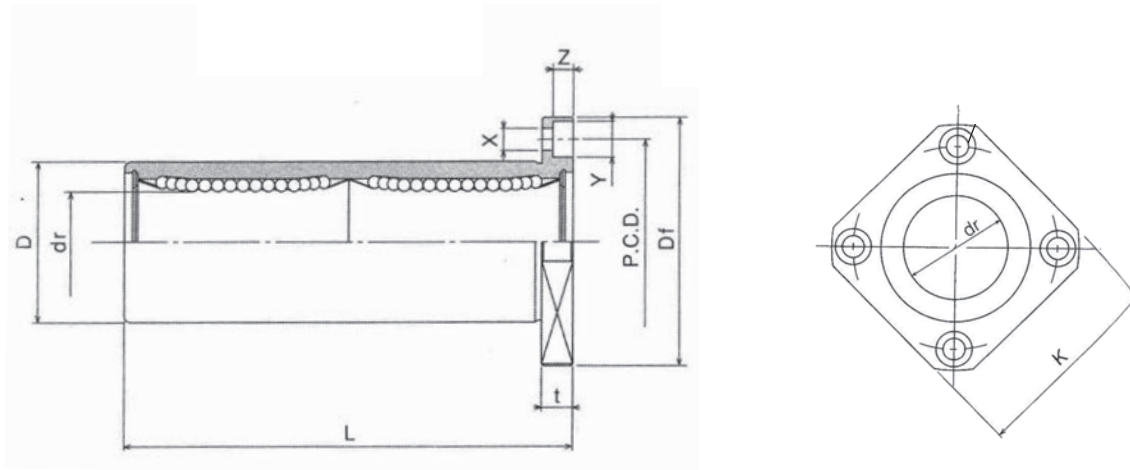
NOTE: Part number ending with "UU" signifies seal both ends

PLEASE ALSO SEE OUR RANGE OF BUSHES COMPLETE WITH HOUSINGS



Flanged Bushes – LMKL

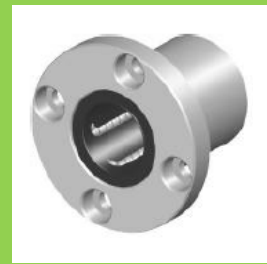
Asian Standard – Long Type



Size Ø dr	Ø D h6	Ø Df -0.3	L -0.3	K	T	PCD	X x Y x Z	Mass (kg)	Dyn. Cap (N)	Stat. Cap (N)	Part Number
10	19	40	55	30	6	29	4.5 x 8.0 x 4.4	0.10	580	1100	LMK10-LUU
12	21	42	57	32	6	32	4.5 x 8.0 x 4.4	0.11	650	1200	LMK12-LUU
16	28	48	70	37	6	38	4.5 x 8.0 x 4.4	0.19	1230	2350	LMK16-LUU
20	32	54	80	42	8	43	5.5 x 9.5 x 5.4	0.26	1400	2750	LMK20-LUU
25	40	62	112	50	8	51	5.5 x 9.5 x 5.4	0.52	1560	3140	LMK25-LUU
30	45	74	123	58	10	60	6.6 x 11 x 6.5	0.66	2490	5490	LMK30-LUU
40	60	96	154	75	13	78	9.0 x 14 x 8.6	1.56	3430	8040	LMK40-LUU
50	80	116	192	92	13	98	9.0 x 14 x 8.6	3.50	6080	15900	LMK50-LUU
60	90	134	211	106	18	112	11 x 17.5 x 10.8	4.50	7650	20000	LMK60-LUU

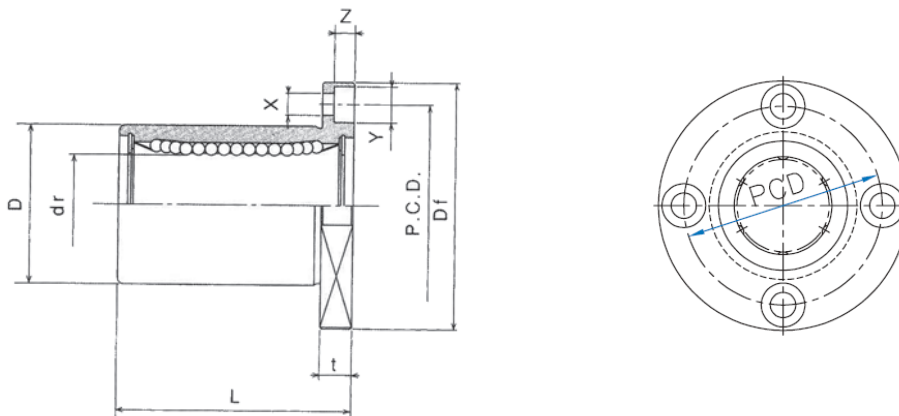
NOTE: Part number ending with "UU" signifies seal both ends

PLEASE ALSO SEE OUR RANGE OF BUSHES COMPLETE WITH HOUSINGS



Flanged Bushes – LMF

Asian Standard – Standard Type



Size Ø dr	Ø D h6	Ø Df -0.3	L -0.3	T	PCD	X x Y x Z	Mass (kg)	Dyn. Cap (N)	Stat. Cap (N)	Part Number
8	15	32	24	5	24	3.4 x 6.5 x 3.3	0.04	260	400	LMF08-UU
10	19	40	29	6	29	4.5 x 8.0 x 4.4	0.07	370	540	LMF10-UU
12	21	42	30	6	32	4.5 x 8.0 x 4.4	0.08	410	590	LMF12-UU
16	28	48	37	6	38	4.5 x 8.0 x 4.4	0.13	770	1170	LMF16-UU
20	32	54	42	8	43	5.5 x 9.5 x 5.4	0.18	860	1370	LMF20-UU
25	40	62	59	8	51	5.5 x 9.5 x 5.4	0.34	980	1560	LMF25-UU
30	45	74	64	10	60	6.6 x 11 x 6.5	0.46	1560	2740	LMF30-UU
40	60	96	80	13	78	9.0 x 14 x 8.6	1.05	2150	4010	LMF40-UU
50	80	116	100	13	98	9.0 x 14 x 8.6	2.20	3820	7930	LMF50-UU
60	90	134	110	18	112	11 x 17.5 x 10.8	2.96	4700	9990	LMF60-UU

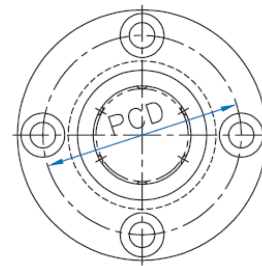
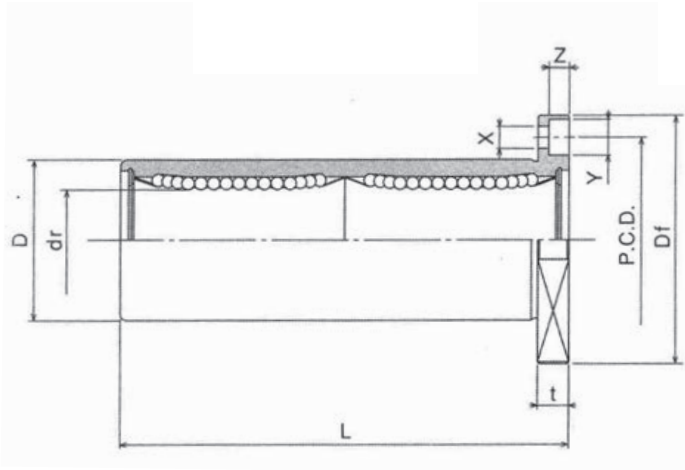
NOTE: Part number ending with "UU" signifies seal both ends

PLEASE ALSO SEE OUR RANGE OF BUSHES COMPLETE WITH HOUSINGS



Flanged Bushes – LMFL

Asian Standard – Long Type



Size Ø dr	Ø D h6	Ø Df -0.3	L -0.3	T	PCD	X x Y x Z	Mass (kg)	Dyn. Cap (N)	Stat. Cap (N)	Part Number
10	19	40	55	6	29	4.5 x 8.0 x 4.4	0.10	580	1100	LMF10-LUU
12	21	42	57	6	32	4.5 x 8.0 x 4.4	0.11	650	1200	LMF12-LUU
16	28	48	70	6	38	4.5 x 8.0 x 4.4	0.19	1230	2350	LMF16-LUU
20	32	54	80	8	43	5.5 x 9.5 x 5.4	0.26	1400	2750	LMF20-LUU
25	40	62	112	8	51	5.5 x 9.5 x 5.4	0.52	1560	3140	LMF25-LUU
30	45	74	123	10	60	6.6 x 11 x 6.5	0.66	2490	5490	LMF30-LUU
40	60	96	154	13	78	9.0 x 14 x 8.6	1.56	3430	8040	LMF40-LUU
50	80	116	192	13	98	9.0 x 14 x 8.6	3.50	6080	15900	LMF50-LUU
60	90	134	211	18	112	11 x 17.5 x 10.8	4.50	7650	20000	LMF60-LUU

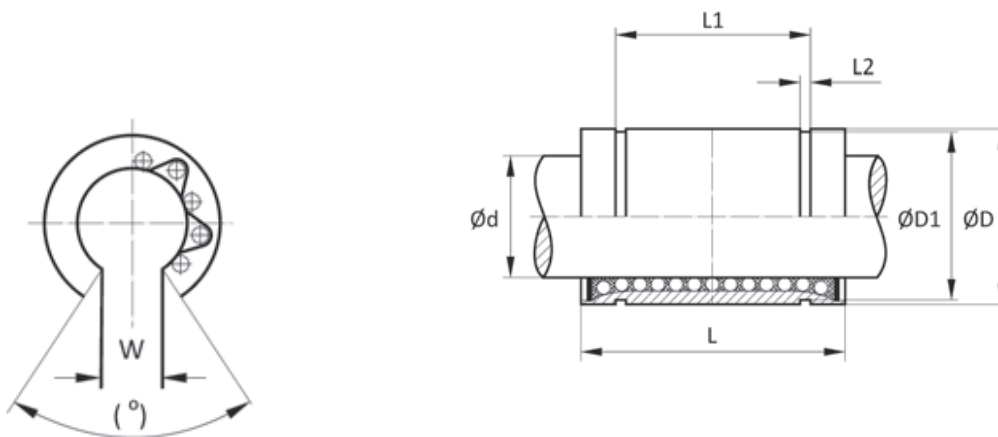
NOTE: Part number ending with "UU" signifies seal both ends

PLEASE ALSO SEE OUR RANGE OF BUSHES COMPLETE WITH HOUSINGS



Open Bushes – LM OP

Asian Standard – For Support Rails



Size Ø d	Ø D h6	Ø D1	L -0.3	L1 -0.3	L2	W	(°)	Mass (kg)	Dyn. Cap (N)	Stat. Cap (N)	Part Number
12	21	20.0	30	23.0	1.5	8	80	0.04	410	590	LM12-UUOP
16	28	27.0	37	26.5	1.5	11	80	0.07	770	1170	LM16-UUOP
20	32	30.5	42	30.5	1.5	11	60	0.09	860	1370	LM20-UUOP
25	40	38.0	59	41.0	2.0	12	50	0.22	980	1560	LM25-UUOP
30	45	43.0	64	44.5	2.5	15	50	0.25	1560	2740	LM30-UUOP
40	60	57.0	80	60.5	3.0	20	50	0.59	2150	4010	LM40-UUOP
50	80	76.5	100	74.0	3.0	25	50	1.58	3820	7930	LM50-UUOP
60	90	86.5	110	85.0	3.0	30	50	2.00	4700	9990	LM60-UUOP

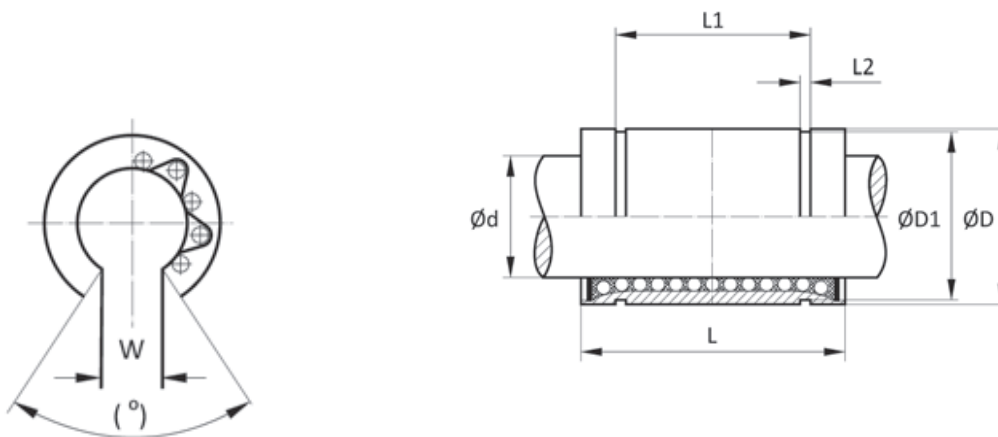
NOTE: Part number ending with "UU" signifies seal both ends

PLEASE ALSO SEE OUR RANGE OF BUSHES COMPLETE WITH HOUSINGS



Open Bushes – LME OP

European Standard – For Support Rails



Size Ø d	Ø D h5	Ø D1	L -0.3	L1 -0.3	L2	W	(°)	Mass (kg)	Dyn. Cap (N)	Stat. Cap (N)	Part Number
8	16	15.2	25	16.5	1.1	-	-	0.02	350	410	LME08-UUOP
12	22	21.0	32	22.9	1.3	7.5	78	0.04	555	800	LME12-UUOP
16	26	24.9	36	24.9	1.3	10.0	78	0.06	1045	910	LME16-UUOP
20	32	30.3	45	31.5	1.6	10.0	60	0.09	1170	1400	LME20-UUOP
25	40	37.5	58	44.1	1.85	12.5	60	0.21	1330	1600	LME25-UUOP
30	47	44.5	68	52.1	1.85	12.5	50	0.32	2120	2800	LME30-UUOP
40	62	59.0	80	60.6	2.15	16.8	50	0.70	2920	4100	LME40-UUOP
50	75	72.0	100	77.6	2.65	21.0	50	1.13	5195	8100	LME50-UUOP
60	90	86.5	125	101.7	3.15	27.2	54	2.05	6390	10200	LME60-UUOP

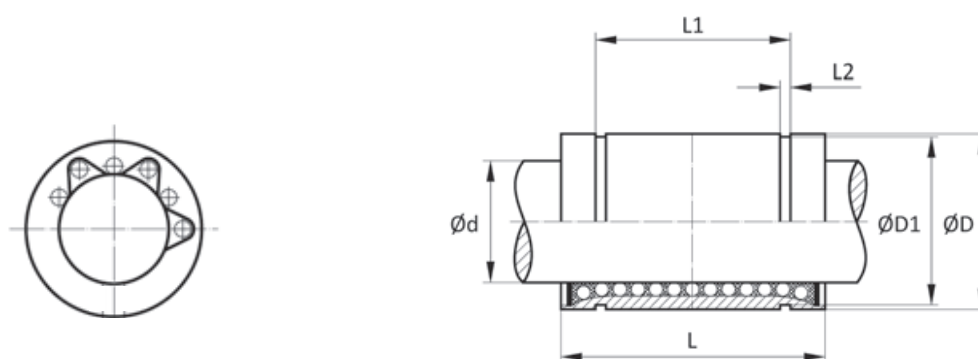
NOTE: Part number ending with "UU" signifies seal both ends

PLEASE ALSO SEE OUR RANGE OF BUSHES COMPLETE WITH HOUSINGS



Plain Linear Bushes – LME

European Standard – Standard Type



Size Ø d	Ø D	Ø D1	L	L1	L2	Mass (kg)	Dyn. Cap (N)	Stat. Cap (N)	Part Number
8	16	15.2	25	16.5	1.1	0.02	350	410	LME08-UU
12	22	21.0	32	22.9	1.3	0.04	555	800	LME12-UU
16	26	24.9	36	24.9	1.3	0.06	1045	910	LME16-UU
20	32	30.3	45	31.5	1.6	0.09	1170	1400	LME20-UU
25	40	37.5	58	44.1	1.85	0.21	1330	1600	LME25-UU
30	47	44.5	68	52.1	1.85	0.32	2120	2800	LME30-UU
40	62	59.0	80	60.6	2.15	0.70	2920	4100	LME40-UU
50	75	72.0	100	77.6	2.65	1.13	5195	8100	LME50-UU
60	90	86.5	125	101.7	3.15	2.05	6390	10200	LME60-UU

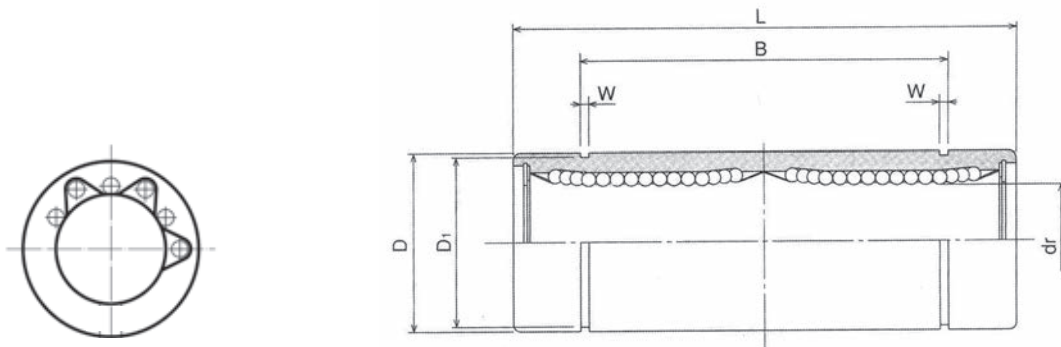
NOTE: Part number ending with "UU" signifies seal both ends

ADJUSTABLE BUSHES AND BUSHES WITH RELUBRICATION PORTS AVAILABLE ON REQUEST
PLEASE ALSO SEE OUR RANGE OF BUSHES COMPLETE WITH HOUSINGS



Plain Linear Bushes – LMEL

European Standard – Long Type



Size Ø dr	Ø D	Ø D1	L	B	W	Mass (kg)	Dyn. Cap (N)	Stat. Cap (N)	Part Number
8	16	15.2	46	33.0	1.1	0.04	430	820	LME08-LUU
12	22	21.0	61	45.8	1.3	0.08	830	1600	LME12-LUU
16	26	24.9	68	49.8	1.3	0.12	920	1780	LME16-LUU
20	32	30.5	80	61.0	1.6	0.18	1370	2470	LME20-LUU
25	40	38.0	112	82.0	1.85	0.43	1570	2140	LME25-LUU
30	47	44.5	123	104.2	1.85	0.62	2500	5490	LME30-LUU
40	62	59.0	151	121.2	2.15	1.40	3430	8040	LME40-LUU
50	75	72.0	192	155.2	2.65	2.32	6080	15900	LME50-LUU

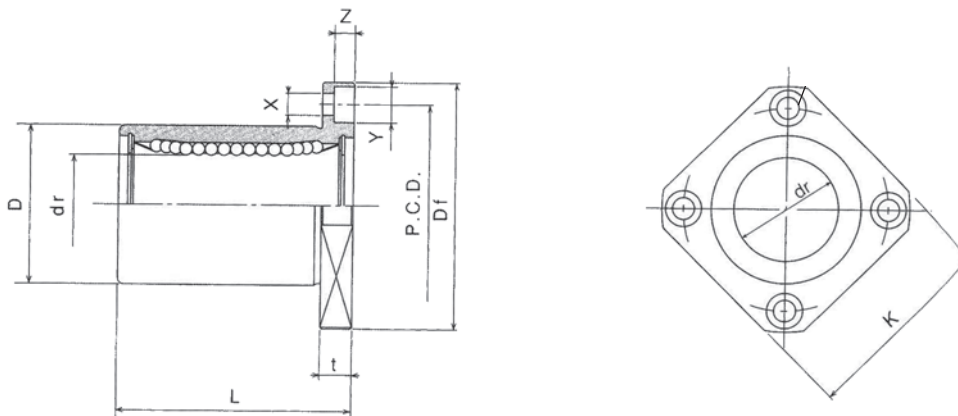
NOTE: Part number ending with "UU" signifies seal both ends

PLEASE ALSO SEE OUR RANGE OF BUSHES COMPLETE WITH HOUSINGS



Flanged Bushes – LMEK

European Standard – Standard Type



Size Ø dr	Ø D	Ø Df	L	K	T	PCD	X x Y x Z	Mass (kg)	Dyn. Cap (N)	Stat. Cap (N)	Part Number
8	16	32	25	25	5	24	3.5 x 6.0 x 3.1	0.04	270	410	LMEK08-UU
12	22	42	32	32	6	32	4.5 x 7.5 x 4.1	0.07	520	800	LMEK12-UU
16	26	46	36	35	6	36	4.5 x 7.5 x 4.1	0.09	590	910	LMEK16-UU
20	32	54	45	42	8	43	5.5 x 9.0 x 5.1	0.15	880	1400	LMEK20-UU
25	40	62	58	50	8	51	5.5 x 9.0 x 5.1	0.30	1000	1600	LMEK25-UU
30	47	76	68	60	10	62	6.6 x 11 x 6.1	0.47	1600	2800	LMEK30-UU
40	62	98	80	75	13	80	9.0 x 14 x 8.1	0.98	2200	4100	LMEK40-UU
50	75	112	100	88	13	94	9.0 x 14 x 8.1	1.55	3900	8100	LMEK50-UU

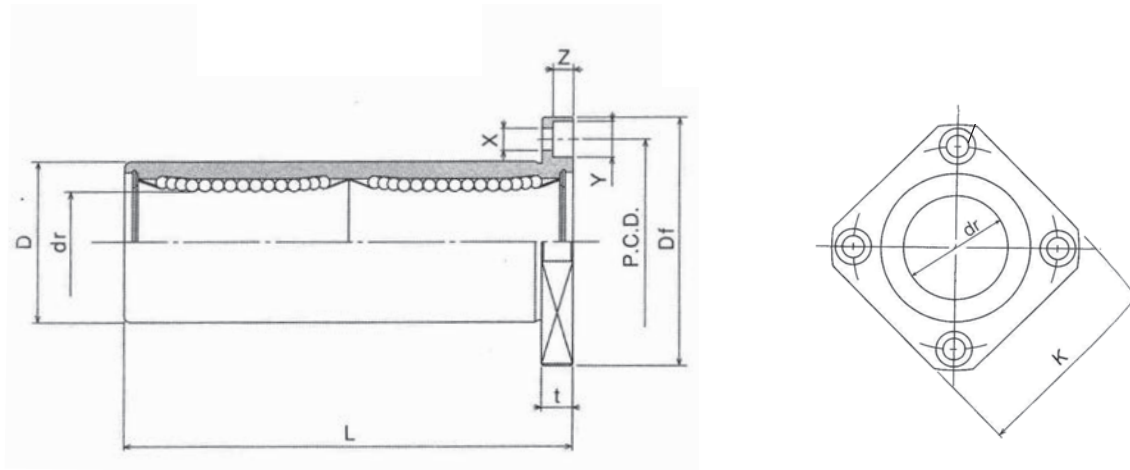
NOTE: Part number ending with "UU" signifies seal both ends

PLEASE ALSO SEE OUR RANGE OF BUSHES COMPLETE WITH HOUSINGS



Flanged Bushes – LMEKL

European Standard – Long Type



Size Ø dr	Ø D	Ø Df	L	K	T	PCD	X x Y x Z	Mass (kg)	Dyn. Cap (N)	Stat. Cap (N)	Part Number
8	16	32	46	25	5	24	3.5 x 6.0 x 3.1	0.05	430	820	LMEK08-LUU
12	22	42	61	32	6	32	4.5 x 7.5 x 4.1	0.09	830	1600	LMEK12-LUU
16	26	46	68	35	6	36	4.5 x 7.5 x 4.1	0.14	940	1820	LMEK16-LUU
20	32	54	80	42	8	43	5.5 x 9.0 x 5.1	0.23	1400	2800	LMEK20-LUU
25	40	62	112	50	8	51	5.5 x 9.0 x 5.1	0.50	1600	3200	LMEK25-LUU
30	47	76	123	60	10	62	6.6 x 11 x 6.1	0.72	2250	5600	LMEK30-LUU
40	62	98	151	75	13	80	9.0 x 14 x 8.1	1.60	3500	8200	LMEK40-LUU
50	75	112	192	88	13	94	9.0 x 14 x 8.1	2.62	6200	16220	LMEK50-LUU

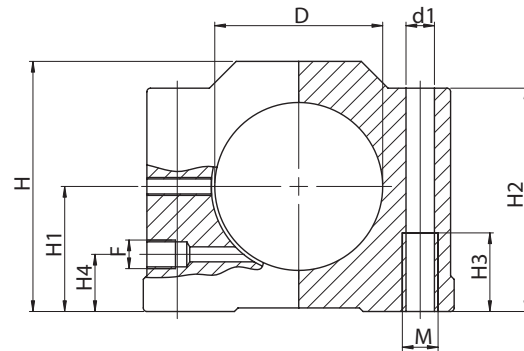
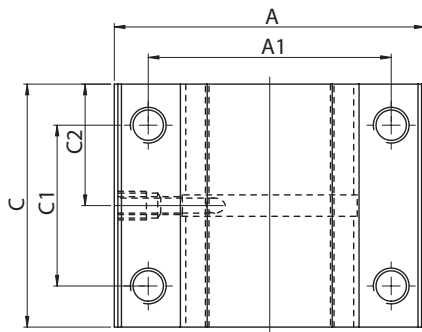
NOTE: Part number ending with "UU" signifies seal both ends

PLEASE ALSO SEE OUR RANGE OF BUSHES COMPLETE WITH HOUSINGS



Bushes & Housings – SB

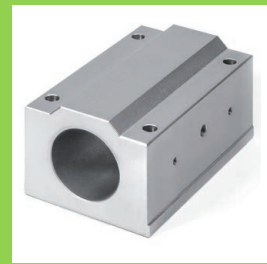
Closed Type – Standard Length



Size Ø d	Ø D h5	Ø d1	M	A	A1 ±0.15	C	C1 ±0.15	C2	H	H1 +0.008 -0.016	H2	H3	H4	F	Mass (kg)	Part Number (Housing c/w Bush)
12	22	4.3	M5	43	32	32	23	16	35	18	31	11	8	M6x1	0.11	SB-12-LMEUU-AS
16	26	5.3	M6	53	40	36	26	18	42	22	37	13	12	M8x1	0.20	SB-16-LMEUU-AS
20	32	6.6	M8	60	45	45	32	22.5	50	25	44	18	13	M8x1	0.30	SB-20-LMEUU-AS
25	40	8.4	M10	78	60	58	40	29	60	30	52.5	22	15	M8x1	0.64	SB-25-LMEUU-AS
30	47	8.4	M10	87	68	68	45	34	70	35	62.5	22	16	M8x1	0.99	SB-30-LMEUU-AS
40	62	10.5	M12	108	86	80	58	40	90	45	80	26	20	M8x1	1.92	SB-40-LMEUU-AS
50	75	13.5	M16	132	108	100	50	50	101	50	88	34	22	M8x1	3.07	SB-50-LMEUU-AS
60	90	13.5	M16	160	132	125	65	80	120	60	105	38	25	M8x1	5.62	SB-60-LMEUU-AS

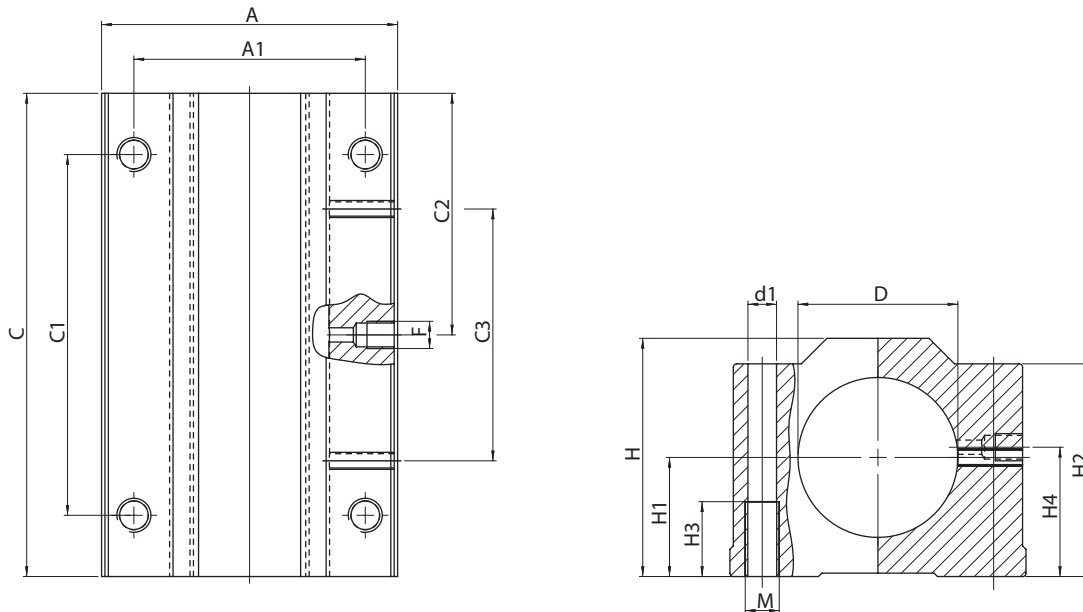
NOTE: Housings supplied complete with LME-UU bushes
See loading data for LME-UU bushes on page 26

BUSHINGS IN HOUSINGS DELIVERED PRE-ASSEMBLED



Bushes & Housings – SBT

Closed Type – Long Type



Size Ø d	Ø D h5	Ø d1	M	A	A1 ±0.15	C	C1 ±0.15	C2	C3	H	H1 +0.008 -0.016	H2	H3	H4	F	Mass (kg)	Part Number (Housing c/w Bush)
12	22	4.3	M5	43	32	70	56	35	38	35	18	31	11	8	M6x1	0.26	SBT-12-LMEUU-AS
16	26	5.3	M6	53	40	78	64	39	42	42	22	37	13	12	M8x1	0.42	SBT-16-LMEUU-AS
20	32	6.6	M8	60	45	96	76	48	51	50	25	44	18	13	M8x1	0.66	SBT-20-LMEUU-AS
25	40	8.4	M10	78	60	122	94	61	64	60	30	52.5	22	15	M8x1	1.38	SBT-25-LMEUU-AS
30	47	8.4	M10	87	68	142	106	71	74	70	35	62.5	22	16	M8x1	2.08	SBT-30-LMEUU-AS
40	62	10.5	M12	108	86	166	124	83	86	90	45	80	26	20	M8x1	4.02	SBT-40-LMEUU-AS
50	75	13.5	M16	132	108	212	160	106	112	101	50	88	34	22	M8x1	6.62	SBT-50-LMEUU-AS
60	90	13.5	M16	160	132	260	200	130	135	120	60	105	38	25	M8x1	11.7	SBT-60-LMEUU-AS

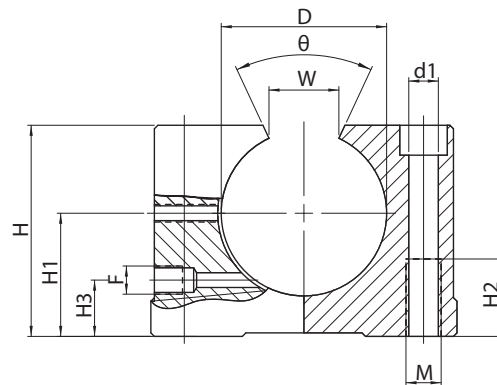
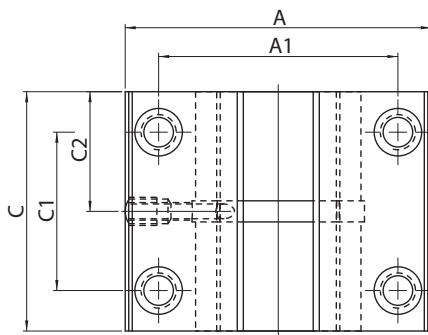
NOTE: Housings supplied complete with 2x LME-UU bushes
See loading data for LME-UU bushes on page 26

BUSHINGS IN HOUSINGS DELIVERED PRE-ASSEMBLED



Bushes & Housings – SO

Open Type – Standard Length



Size Ø d	Ø D h5	Ø d1	M	A	A1 ±0.15	C	C1 ±0.15	C2	H	H1 +0.008 -0.016	H2	H3	W	Ø	F	Mass (kg)	Part Number (Housing c/w Bush)
12	22	4.3	M5	43	32	32	23	16	28	18	11	8	7.5	78°	M6x1	0.10	SO-12-LMEUUOP-AS
16	26	5.3	M6	53	40	36	26	18	35	22	13	12	10.0	78°	M8x1	0.17	SO-16-LMEUUOP-AS
20	32	6.6	M8	60	45	45	32	22.5	42	25	18	13	10.0	60°	M8x1	0.26	SO-20-LMEUUOP-AS
25	40	8.4	M10	78	60	58	40	29	51	30	22	15	12.5	60°	M8x1	0.57	SO-25-LMEUUOP-AS
30	47	8.4	M10	87	68	68	45	34	60	35	22	16	12.5	50°	M8x1	0.88	SO-30-LMEUUOP-AS
40	62	10.5	M12	108	86	80	58	40	77	45	26	20	16.8	50°	M8x1	1.70	SO-40-LMEUUOP-AS
50	75	13.5	M16	132	108	100	50	50	88	50	34	22	21.0	50°	M8x1	2.81	SO-50-LMEUUOP-AS
60	90	13.5	M16	160	132	125	65	80	105	60	38	25	27.2	54°	M8x1	5.22	SO-60-LMEUUOP-AS

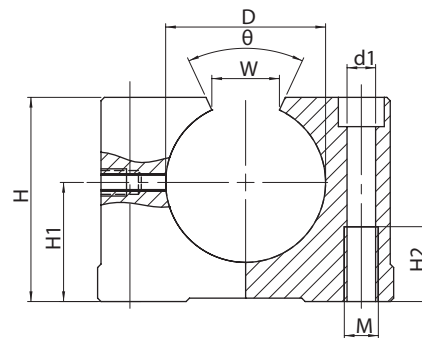
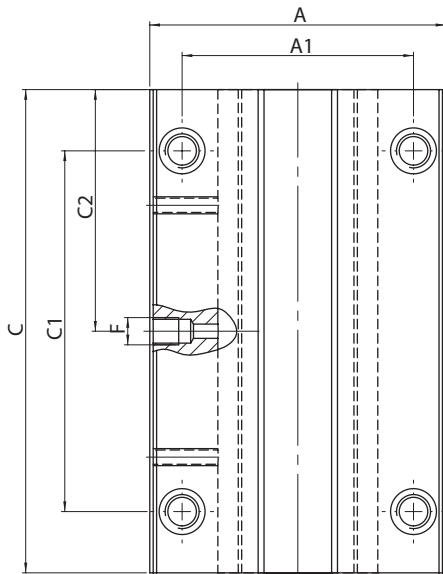
NOTE: Housings supplied complete with LME-UUOP bushes
See loading data for LME-UUOP bushes on page 25

BUSHINGS IN HOUSINGS DELIVERED PRE-ASSEMBLED



Bushes & Housings – SOT

Open Type – Long Type



Size Ø d	Ø D h5	Ø d1	M	A	A1 ±0.15	C	C1 ±0.15	C2	C3	H	H1 +0.008 -0.016	H2	H3	W	Ø	F	Mass (kg)	Part Number (Housing c/w Bush)
12	22	4.3	M5	43	32	70	56	35	38	28	18	11	8	7.5	78°	M6x1	0.11	SOT-12-LMEUUOP-AS
16	26	5.3	M6	53	40	78	64	39	42	35	22	13	12	10.0	78°	M8x1	0.20	SOT-16-LMEUUOP-AS
20	32	6.6	M8	60	45	96	76	48	51	42	25	18	13	10.0	60°	M8x1	0.30	SOT-20-LMEUUOP-AS
25	40	8.4	M10	78	60	122	94	61	64	51	30	22	15	12.5	60°	M8x1	0.64	SOT-25-LMEUUOP-AS
30	47	8.4	M10	87	68	142	106	71	74	60	35	22	16	12.5	50°	M8x1	0.99	SOT-30-LMEUUOP-AS
40	62	10.5	M12	108	86	166	124	83	86	77	45	26	20	16.8	50°	M8x1	1.92	SOT-40-LMEUUOP-AS
50	75	13.5	M16	132	108	212	160	106	112	88	50	34	22	21.0	50°	M8x1	3.07	SOT-50-LMEUUOP-AS
60	90	13.5	M16	160	132	260	200	130	135	105	60	38	25	27.2	54°	M8x1	5.62	SOT-60-LMEUUOP-AS

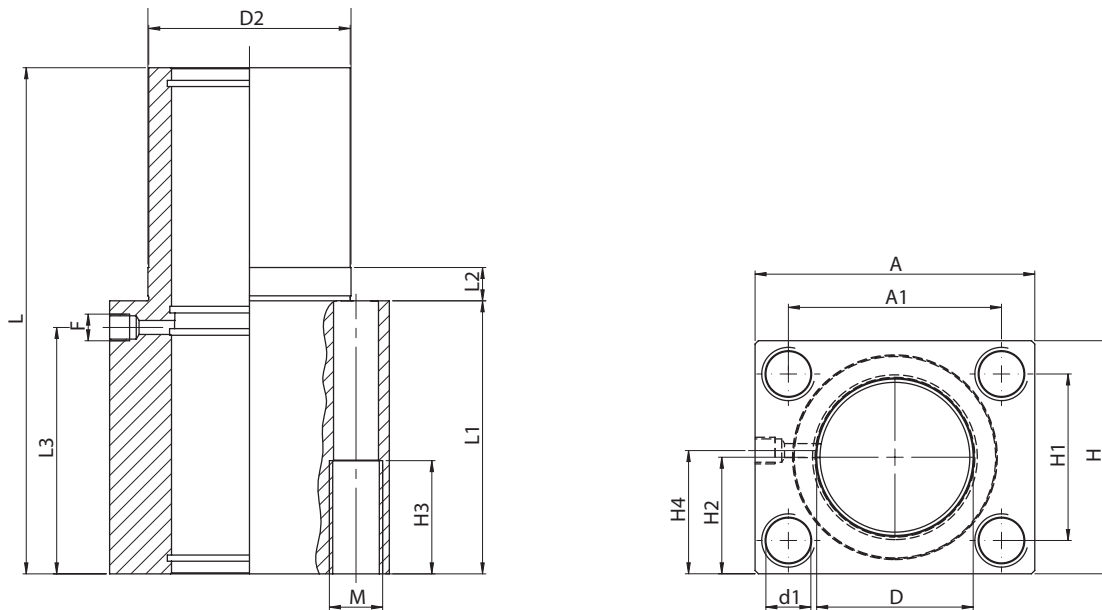
NOTE: Housings supplied complete with 2x LME-UUOP bushes
See loading data for LME-UUOP bushes on page 25

BUSHINGS IN HOUSINGS DELIVERED PRE-ASSEMBLED



Bushes & Housings – SVT

Flanged Type – Closed Long Type



Size Ø d	Ø D h5	Ø D2	Ø d1	M	A	A1 ±0.25	H	H1 ±0.25	H2	H3	H4	L	L1	L2 g7	L3	F	Mass (kg)	Part Number (Housing c/w Bush)
12	22	30	5.3	M6	40	32	34	24	17	13	19	76	46	10	36	M8x1	0.22	SVT-12-LMEUU-AS
16	26	35	6.6	M8	50	38	40	28	20	18	22	84	50	10	40	M8x1	0.34	SVT-16-LMEUU-AS
20	32	42	8.4	M10	60	45	50	35	25	22	27	104	60	10	50	M8x1	0.57	SVT-20-LMEUU-AS
25	40	52	10.5	M12	74	56	60	42	30	26	32	130	73	10	63	M8x1	1.11	SVT-25-LMEUU-AS
30	47	61	13.5	M16	84	64	70	50	35	34	37	152	82	10	74	M8x1	1.62	SVT-30-LMEUU-AS

NOTE: Housings supplied complete with 2x LME-UU bushes
See loading data for LME-UU bushes on page 26

BUSHINGS IN HOUSINGS DELIVERED PRE-ASSEMBLED



ServoBox Gearboxes

Please See Our Planetary & Bevel Gearboxes



SB Series

**In-line Precision
Gearbox with Square
B5 Mounting Flange**



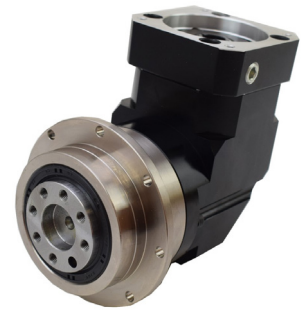
SBL Series

**Right Angle Precision
Gearbox with Square
B5 Mounting Flange**



SD Series

**In-line Precision
Gearbox with ISO 9409
Rotary Output Flange**



SDL Series

**Right Angle Precision
Gearbox with ISO 9409
Rotary Output Flange**



SE Series

**In-line Precision
Gearbox with Round
B14 Mounting Flange**



SEL Series

**Right Angle Precision
Gearbox with Round
B14 Mounting Flange**



SF Series

**In-line Precision
Gearbox Taper Bearings
B5 Mounting Flange**



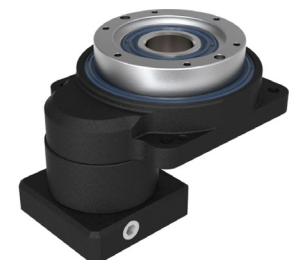
SFL Series

**Right Angle Precision
Gearbox Taper Bearings
B5 Mounting Flange**



SN Series

**In-line Economy
Gearbox with Round
B14 Mounting Flange**



GT Series

**Precision Rotary Tables
Ball or Roller Bearings
Hollow Through Bore**



WE Series

**Precision Worm Gearbox
Solid Shaft, Hollow or
Clamp Output Options**



ST Series

**Precision Bevel Gearbox
Solid Shaft, Hollow or
Clamp Output Options**



DEXIS A Member of Dexis Europe

**2 Centurion Way
Centurion Park
Tamworth
Staffordshire
B77 5PN**

**PLEASE SEE OUR OTHER
PRODUCT RANGES**

WMH Transmissions Limited
"Part of your drive"

LIFTING SYSTEMS
STOCK CATALOGUE
EDITION 01

www.wmh-trans.co.uk
sales@wmh-trans.co.uk

TEL: 01827 288 122
FAX: 01827 253 390

WMH Transmissions Limited
"Part of your drive"

LINEAR MOTION
STOCK CATALOGUE
EDITION 03 - 2017

www.wmh-trans.co.uk
sales@wmh-trans.co.uk

TEL: 01827 288 122
FAX: 01827 253 390

WMH Transmissions Limited
"Part of your drive"

TRANSMISSION PRODUCTS
STOCK CATALOGUE
EDITION 01

www.wmh-trans.co.uk
sales@wmh-trans.co.uk

TEL: 01827 288 122
FAX: 01827 253 390

WMH Transmissions Limited
DEXIS A Member of Dexis Europe

LUBRICATION SYSTEMS
STOCK CATALOGUE
EDITION 01

www.wmh-trans.co.uk
sales@wmh-trans.co.uk

TEL: 01827 288 122
FAX: 01827 253 390



**TEL: 01827 288 122
FAX: 01827 253 390**

**www.wmh-trans.co.uk
sales@wmh-trans.co.uk**